

# October 2019 Mass Attendance Count

Attendance Information Due by **November 9, 2019**

Dear Pastor and Business Manager,

As you know, October is the month that we ask each parish to record Sunday Mass attendance on a weekly basis. Please record by actual count the attendance at all the Sunday Masses, as well as the attendance at anticipated Masses celebrated on Saturday, for the four (4) weekends in October.

Use this form to keep track of attendance throughout the month of October. At the end of the month, please enter attendance information here: <https://denverparish.org/attendance>

*If you are responsible for more than one location (parish, mission, station), please complete attendance information for each location.*

This annual process is very important to the Archdiocese and its respective Deaneries. This information is utilized for multiple purposes and we need and appreciate your full cooperation.

**Who should be counted?** Please refer to the reverse side of this form for information on who should be counted.

**Location Name** \_\_\_\_\_

**DEANERY** \_\_\_\_\_

## October 5 & 6

Number of English Masses: \_\_\_\_\_  
*Combined Attendance:* \_\_\_\_\_  
Number of Spanish Masses: \_\_\_\_\_  
*Combined Attendance:* \_\_\_\_\_  
Number of Masses in another language: \_\_\_\_\_  
**Name of Language:** \_\_\_\_\_  
*Combined Attendance:* \_\_\_\_\_  
**Total cumulative weekend attendance:** \_\_\_\_\_

## October 12 & 13

Number of English Masses: \_\_\_\_\_  
*Combined Attendance:* \_\_\_\_\_  
Number of Spanish Masses: \_\_\_\_\_  
*Combined Attendance:* \_\_\_\_\_  
Number of Masses in another language: \_\_\_\_\_  
**Name of Language:** \_\_\_\_\_  
*Combined Attendance:* \_\_\_\_\_  
**Total cumulative weekend attendance:** \_\_\_\_\_

## October 19 & 20

Number of English Masses: \_\_\_\_\_  
*Combined Attendance:* \_\_\_\_\_  
Number of Spanish Masses: \_\_\_\_\_  
*Combined Attendance:* \_\_\_\_\_  
Number of Masses in another language: \_\_\_\_\_  
**Name of Language:** \_\_\_\_\_  
*Combined Attendance:* \_\_\_\_\_  
**Total cumulative weekend attendance:** \_\_\_\_\_

## October 26 & 27

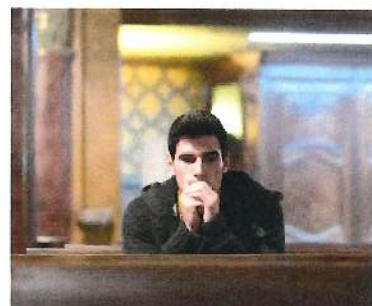
Number of English Masses: \_\_\_\_\_  
*Combined Attendance:* \_\_\_\_\_  
Number of Spanish Masses: \_\_\_\_\_  
*Combined Attendance:* \_\_\_\_\_  
Number of Masses in another language: \_\_\_\_\_  
**Name of Language:** \_\_\_\_\_  
*Combined Attendance:* \_\_\_\_\_  
**Total cumulative weekend attendance:** \_\_\_\_\_

**Thanks to you and your staff for your efforts. For questions regarding the form, please contact Amanda at 303-715-3258.**

**Keith A. Parsons**  
Chief Operating Officer

c: Very Rev. Randy Dollins, V.G.

# Count Every Head



This year, in order to create greater consistency across the entire archdiocese, we ask that every location where Mass is held use the same method for conducting the October count. Please have your ushers do a count of **every head**, i.e., **every new born, child, single person, parent, etc.** Some parishes estimate how many are in each section, others count cars, but from now on, we are asking for you to count each person.

**While this can be more work for your ushers, it was unanimously recommended to the Archbishop by the Deans.**

Hand clickers are inexpensive; a six pack can be purchased on Amazon for \$14. Ushers should be able to stand near the front with a counter behind their back and inconspicuously count every head during the homily. Multiple ushers counting and comparing their totals can be the most effective way of ensuring accuracy.



Sponsored by  
**Mechanical Tally Counter Handheld 6 Pack, Horsky Digit Number Lap Counter Manual Clicker with Finger Ring Sliver**  
by HORSKY

**\$13.99** prime  
FREE Delivery by Friday, Aug 3



Product Features  
... Because it is a mechanical tally counter, you can use it in any time ...